

Ceramitex®

Chip Repair Guide

for Certified Installers



Architectural Facade Systems

Elemex Chip Repair Guide - ELXD-018/09-20

Tools Required

- Utility Knife
- Mixing Cup (supplied in repair kit)
- Integra Adhesive
- Integra Adhesive Applicator
- Masking Tape (painters tape 2" recommended)
- Porc-A-Fix Touch-Up Base
- Color Tints

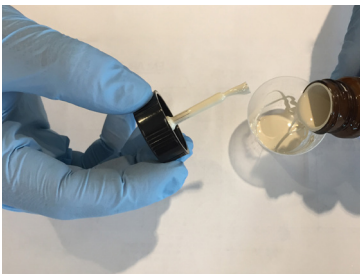
Filling Chip

- Mask off area needing patch. Apply masking tape on edge of damaged area ensuring the tape forms a 90° at both intersecting surfaces. Peel the masking tape from the distance of the damage, to the perpendicular plane.
- Apply base color match Integra epoxy and fill chipped area.



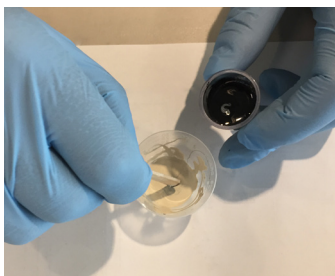
- Allow the fill area to cure to the point where the surface is solid enough that it can be shaved off with your utility knife (approx. 25 minutes).
- After the Integra epoxy is in place, begin your color matching paint process.

Color Matching

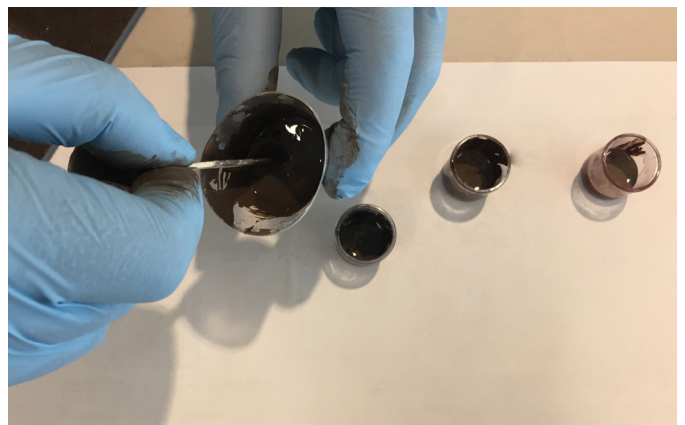


- Get Mixing Cup and add in base Porc-A-Fix until the base covers the bottom of the Mixing Cup (1/8" to 1/4" in depth).

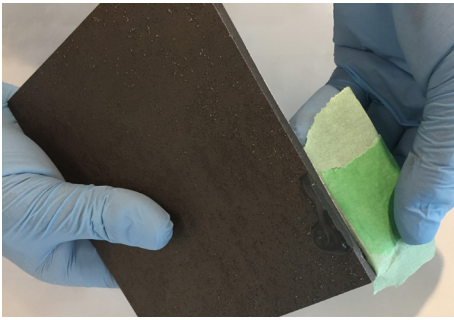
- Once the desired base quantity has been executed, begin to add the color tints to replicate the color of the ceramic slab you are trying to match.



- Thoroughly mix the color tint with the base material until a uniform color has been achieved with the ceramic touch up paint.

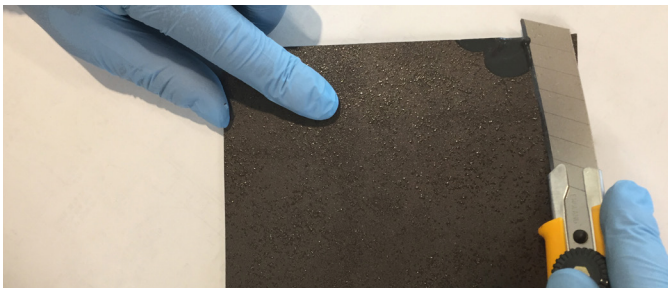


Finishing Filled Chip

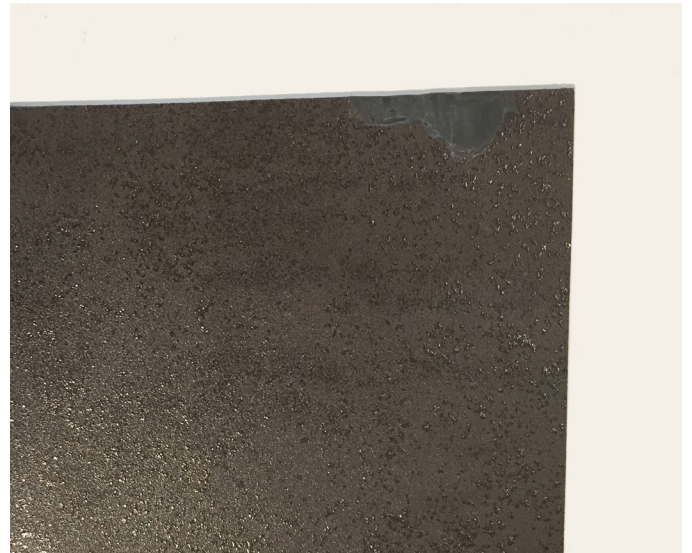


- Remove masking tape dam that you made on the patch piece.

- Cut away excess epoxy.

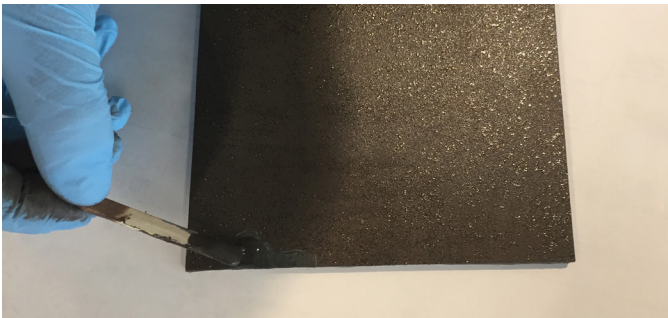


- Create new straight edges.

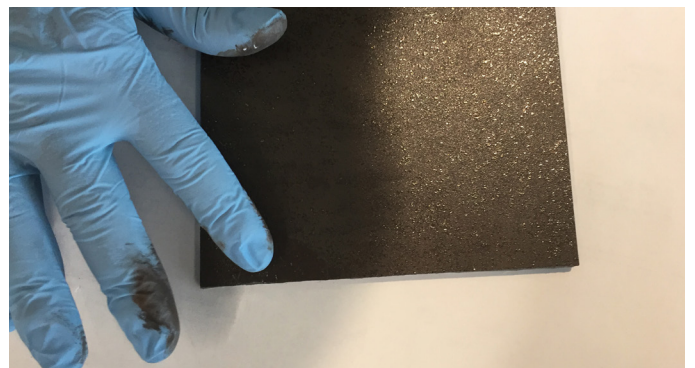


Ceramic Paint Touch-Ups

- Apply color-matched paint to area filled.



- Using a plastic gloved finger or small paint brush, pat/dabbing the paint to dull it out a bit.



- Completed repair.



Before Repair



After Repair



You can watch the step by step video at: https://youtu.be/m_TyHbtGz5E