



 elemex<sup>®</sup>

Architectural Facade Systems



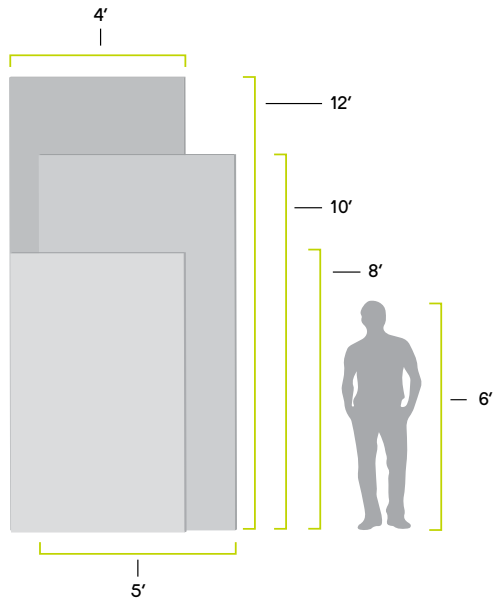
# ceramiteX<sup>®</sup>

Sintered Ceramic Facade System

## Strong. Beautiful. Lasting.

Introducing Ceramitex<sup>®</sup>. A facade system that simply outperforms. Our large format sintered ceramic facades are lightweight yet durable enough to defy graffiti, scratches, weather, and the test of time. The system is fabricated to your exacting specifications on our proprietary Unity<sup>®</sup> integrated attachment technology, giving you a complete system engineered to beautify and protect your project. Ceramitex is North American code compliant and is supported by the Elemex<sup>®</sup> 360° Advantage.

### Product Specifications



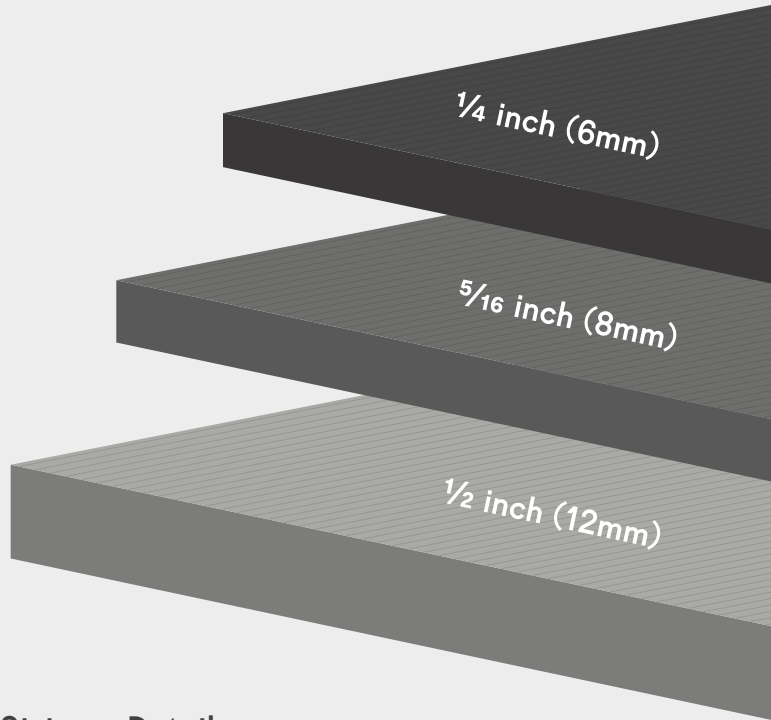
### Composition + Material

Ceramitex<sup>®</sup> sintered ceramic panels consist of a sintered ceramic slab manufactured with fiberglass reinforced mesh backing that is adhered to our proprietary Unity<sup>®</sup> attachment technology.

### Sizing + Details

Panels are available in 5' x 10' (1524mm x 3048mm), 4' x 12' (1219mm x 3657mm), and 4' x 8' (1219mm x 2438mm) in the 6mm thickness and 4.5' x 10.5' (1440mm x 3200mm) in the 8mm.

Standard panel thicknesses are 1/4" (6mm) and 5/16" (8mm). Additional thickness available is 1/2" (12mm).



## Features & Benefits



### Code Compliant

The Ceramitex System is an architectural ceramic product proven to meet or exceed industry code standards throughout North America.



### Climate Defiant

Resistant to expansion and contraction in high temperature or freezing conditions.



### Impact Resistant

Ceramitex<sup>®</sup> panels are strong, lightweight and extremely resilient against high traffic abrasion.



### Mitered Corners

Unique to the Ceramitex System is the ability to create large mitered returns, giving a striking dimensional appearance to any returning edge.



### Waterproof

Waterproof panels combined with a patented pressure-equalized rainscreen system provide the ultimate weather barrier.



### Lightweight

Sintered ceramic panels with a thickness of 6mm are approximately 3.8lbs per square foot.



### Large Format

Large format sintered ceramic panels open a world of design possibilities. Offered in a range of colors and textures.



### Graffiti-Proof

Ceramitex sintered ceramic panels are easy to maintain and impervious to chemicals.



### UV Resistant

Since the color is 100% natural, it does not deteriorate due to exposure to the sun or extreme temperatures.



### Scratch Resistant

Panels are resistant to scratching and abrasion due to the hardness of the surface.





Canada Science and Technology Museum



Medical Council of Canada



Vaughan Civic Centre Resource Library



Credit Union of Texas





High strength, low weight, endless versatility, and non-combustible.

## Product Specifications

### Composition + Materials

Aluminum Plate is a high strength, low weight aluminum alloy sheet that is durable and has excellent formability. Solid aluminum plate panels are non-combustible and therefore have no installation limitations.

### Standard\* Panel Sizes (actual face size of panel) :

46" x 94" (1168mm x 2387mm)	58" x 94" (1473mm x 2387mm)
46" x 118" (1168mm x 2997mm)	58" x 118" (1473mm x 2997mm)
46" x 142" (1168mm x 3606mm)	58" x 142" (1473mm x 3606mm)

### Standard\* Thickness:

1/8" (3mm)  
Solid: Select applications

\*Custom sizes and thickness are available.  
Consult your Elemex Agent for availability and pricing.

**Weight:** Approximately 3lbs/SF

**Warranty:** 1-year manufacturer (20-year finish)

### Finish:

Aluminum Plate is post-painted, typically with a PPG Duranar, which allows for an endless possibility of color choices.

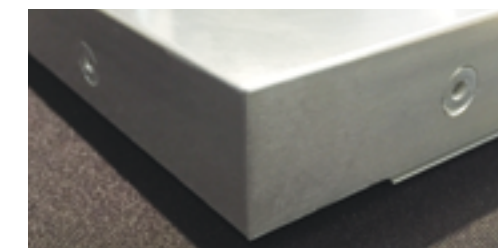


### Available in these options:

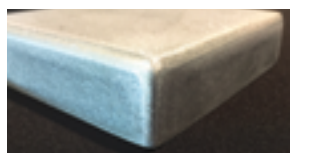
- Duranar – 2 coat system (primer & color), solid colors only
- Duranar Sunstorm – 2 coat system (primer and mica containing color), mica finishes
- Duranar XL – 3 coat system (primer, color, and clear coat), solid, mica and metallic colors available



Our precision route & return fabrication process delivers a superior edge aesthetic that requires no welding or grinding.



Tru-90® Edge



Bullnose Edge

### Features & Benefits



#### Climate Defiant

Resistant to expansion and contraction in high temperature or freezing conditions.



#### UV Resistant

Color is resistant to fading from exposure to the sun or extreme temperatures.



#### Weatherproof

Weatherproof panels combined with a patented pressure-equalized rainscreen system provide the ultimate weather barrier.



#### Endless Versatility

Extremely durable. Aluminum plate offers the opportunity to create square, crisp lines and compound curves.



#### Completely Customizable

Aluminum plate is post-painted which allows an endless possibility of color choices.

# alumitex<sup>®</sup>

## Aluminum Composite Material (ACM)

A lightweight flat panel designed for both interior and exterior applications.

### Product Specifications

#### Composition + Materials

Aluminum Composite Material consists of two aluminum sheets sandwiching a solid core of extruded thermoplastic material, processed in a continuous process with no glues or adhesives between dissimilar materials. The pre-painted coils ensure color consistency and decrease construction schedules. A protective film is applied to the material in production that should be removed after the fabrication and once panels have been installed.

#### Sizing + Details

**Top:** 0.020" (0.5mm) aluminum skin coated with a PVdF roll-coated finish containing a minimum of 70% Kynar 500<sup>®</sup>/Hylar 5000<sup>®</sup> resins.

**Core:** Anti-toxic low density polyethylene (PE) or mineral-based fire rated (FR) core.

**Bottom:** 0.020" (0.5mm) aluminum skin coated with either a chrome or polyester finish.

#### Thickness:

1/8" (3mm)  
Economical: Select applications (signage + interior)

5/32" (4mm)  
Standard: Multi-storey to grade applications

1/4" (6mm)  
High durability: Ideal for public spaces

#### Standard Panel Sizes:

**Width:** 40" (1020mm), 49" (1250mm), & 62" (1575mm).

**Length:** 19' 6" (6000mm) maximum

### Features & Benefits



#### Code Compliant

The Alumitex<sup>®</sup> System has been proven to meet or exceed industry code standards throughout North America.



#### Climate Defiant

Resistant to expansion and contraction in high temperature or freezing conditions.



#### Lightweight

ACM panels with a thickness of 5/32" (4mm) weigh approximately 2lbs per square foot.



#### Large Format

Large format ACM panels open a world of design possibilities.



#### Weatherproof

Weatherproof panels combined with a patented pressure-equalized rainscreen system provide the ultimate weather barrier.



#### UV Resistant

The color is resistant to fading from exposure to the sun or extreme temperatures.



#### Corrosion Resistant

A PVdF finish protects the panels from the elements making them long-lasting, low maintenance, and corrosion-resistant.



#### Ease of Fabrication

The versatility of ACM allows for fast production and improved lead times.



#### Completely Customizable

ACM is available in over 30 pre-painted colors and in a range of finishes.





Collections Conservation Centre



Fanshawe College



Starlim



Ten93 Queen West





Harness the beauty and power of solar.

Features & Benefits



LEED Compliance

Use of the Solstex® Facade System lessens a building's dependence on energy generated by fossil fuels and can earn up to five LEED credits.



Reliable Return/High Return

The Solstex Facade System generates energy savings that will have covered the cost of installation after 10-12 years.



Design Flexibility

Leveraging Elemex's proprietary Unity® technology, Solstex can be seamlessly integrated with other Elemex® facade systems to provide flush planes and unparalleled design flexibility.



Weather Resistant

Solstex panels have been independently tested and certified to provide reliable performance that exceeds IEC standards in high temperature, high humidity, and extreme weather, including rain and snow.



Lightweight

At a standard weight of less than 3.5-5.5 lbs per square foot, the Solstex Facade System is designed to make the installation as easy as possible.



Eco-Efficient

With the smallest carbon footprint and lowest water usage during manufacturing, Solstex panels are the photovoltaic (PV) industry's most eco-efficient.



Large Format

Solstex large format panels maximize facade coverage and energy production.



High-Efficiency

Solstex panels deliver significantly more energy than other PV panels, at up to 17.6 W/sq. ft.

Product Specifications

Composition + Materials

Solstex® Solar Panels consist of thin-film CdTe technology or crystalline silicone technology encapsulated between 2 sheets of heat-strengthened glass, adhered to our proprietary Unity® attachment technology.

Standard Panel Size (actual face size of panel) :

F-Series - 48.5" x 79" (1232mm x 2009mm)

K-Series - 39.56" x 66.14 (1005mm x 1680mm)

Watts/Panel: F-Series - 440-470 W

K-Series - 263-289 W

Standard Thickness:

F-Series - 1/4" (6mm)

K-Series - 5/16" (8mm)

Weight: Approximately 3.5-5.5 lbs/SF (depending on chosen panel)

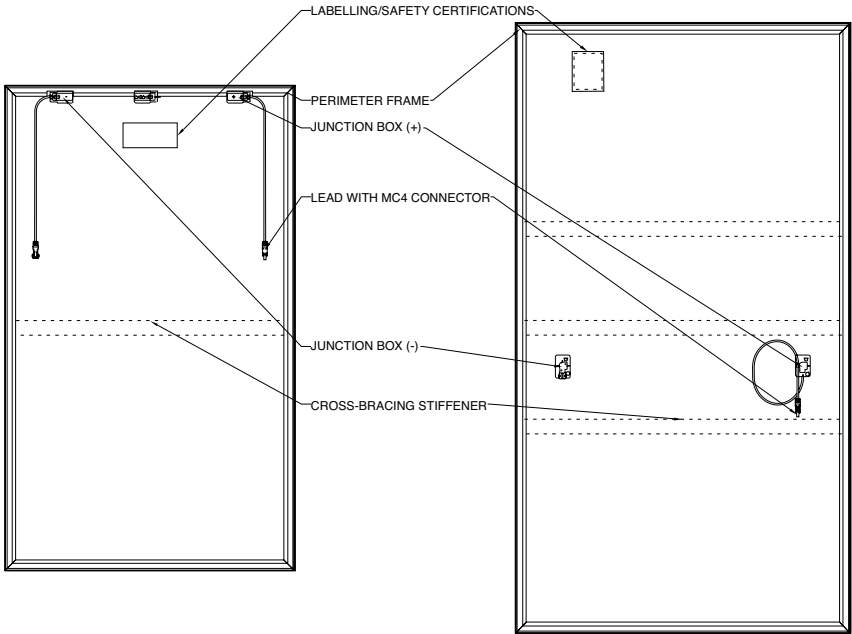
Finish: F-Series - 1/8" (2.8 mm) heat-strengthened glass that presents as a gloss black.

K-Series - Made with 5/32" (4mm) Kromatix™ colored front glass with an opaque back glass.

Warranty: 1-year manufacturer (10-year limited surface warranty) 30-year limited power warranty.

Consult your Elemex® Agent for availability and pricing.

The Solstex® – Solar Facade System by Elemex® is made from high-efficiency photovoltaic (PV) panels that are engineered to be weather-resistant and lightweight. Each large-format, code-compliant panel generates up to 17.6 W/sq.ft., reducing your building's dependence on fossil fuels, earning LEED credits, and generating savings that can cover installation costs within 10-12 years. They are designed to seamlessly integrate with other Elemex products including: Ceramitex®, Stonitex® and Alumitex® facade systems.



Model	Nominal Power [W]	Voltage at Pmax [V]	Current at Pmax [I]	Efficiency [%]	Open Circuit Voltage [V]	Short Circuit Current [I]
F-Series	440-470	182.6 - 188.8	2.36 - 2.44	17.1 - 18.3	219.2 - 222.9	2.54 - 2.59
K-Series	263-289	34.5	7.5-8.3	15.6-17.1	40.6	8.1-8.9

# STONITEX<sup>®</sup>

## Natural Stone Facade System

Capture the strength and beauty of natural stone.

### Features & Benefits



#### 100% Natural

Stonitex<sup>®</sup> panels are 100% natural North American stone, making each panel as unique and beautiful as the stone it's cut from.



#### UV Resistant

Crafted from 100% natural stone, our panels resist fading and weather, so your design is truly timeless.



#### Climate Defiant

Resistant to expansion and contraction in high temperature or freezing conditions.



#### Lightweight

At 40% of the weight of traditional granite facades, the Stonitex Facade System leads the industry for lightness in stone panels, making installation easy.



#### Design Versatility

Engineered to be incredibly thin and lightweight, the Stonitex Facade System allows you to design in ways and places previously impossible for stone facades.



#### Mitered Corners

The Stonitex Facade System allows for the creation of mitered returns, giving a striking dimensional appearance to any returning edge.



#### Flexural Strength

Reinforced carbon fiber mesh backing gives Stonitex panels 10x the flexural strength of a traditional 30mm slab of stone.



#### Large Format

Where traditional dimensional stone is very heavy, thinner Stonitex panels allow for larger format facades and open up a wider variety of design possibilities.

### Product Specifications

#### Composition + Materials

Stonitex<sup>®</sup> Natural Stone Panels consist of a granite slab manufactured with carbon fiber reinforced mesh backing that is adhered to our proprietary Unity<sup>®</sup> attachment technology.

#### Standard\* Panel Sizes (actual face size of panel) :

4' x 8' (1219mm x 2438mm)

**Weight:** Approximately 7.75lbs/SF

**Finish:** Granite comes in polished, honed and antique. Stones may vary depending on cut.

**Warranty:** 1-year manufacturer (5-year finish)

#### Standard\* Thickness:

————— 3/8" (10mm)

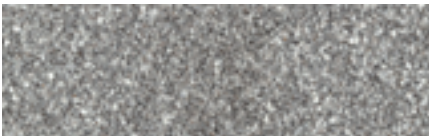
\* Custom sizes and thicknesses available.

Consult your Elemex Agent for availability and pricing.

### Natural Stone Color Options



American Black



Barre Gray



Bethel White



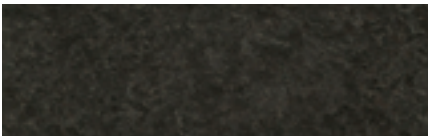
Caledonia



Cambrian Black



Jay White



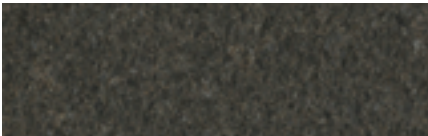
Kodiak Brown



Laurentian Green



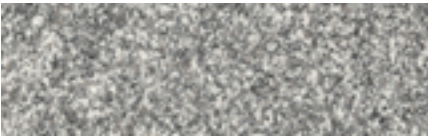
Laurentian Rose



Picasso



Salisbury Pink



Standstead Grey



Titanium Pearl

Visit [elemex.com/stonitex](https://elemex.com/stonitex) for a closer look



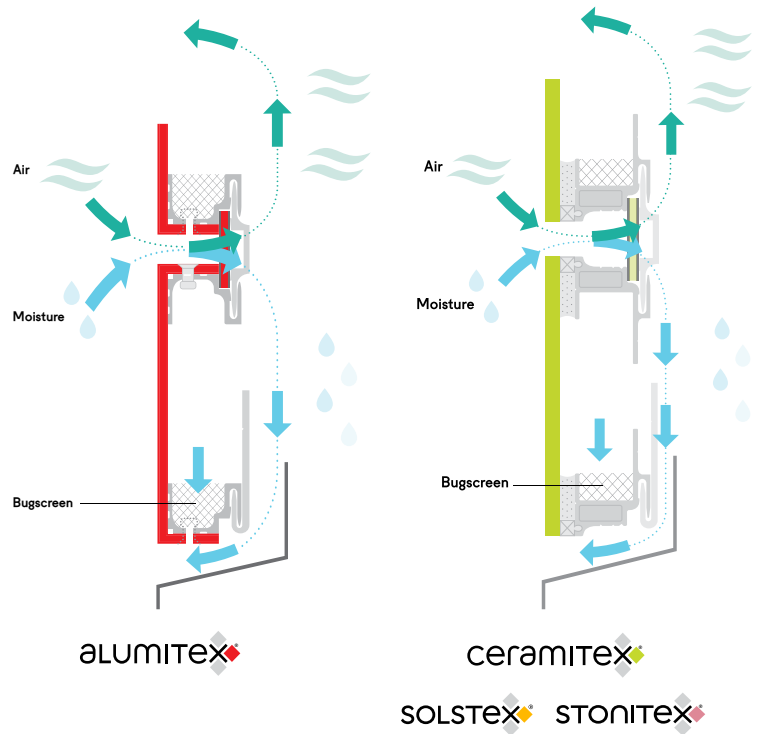
## Rear Ventilated Rainscreen

### Rear Ventilated Rainscreen (RVR)

Our Rear Ventilated Rainscreen (RVR) System breathes freely and allows panels to repel water and debris.

### Pressure-Equalized Rainscreen

Pressure-equalization reduces the pressure difference across the cladding through the use of compartmentalization and back venting. Ingress of incidental water is reduced and residual moisture is returned to the exterior at the drainage plane.



# UNITY®

### One Technology. Built on Trust.

Our proprietary Unity® integrated attachment technology is engineered to work with all of Elemex's exterior cladding surfaces to create all-in-one superior facade systems. The Unity technology allows for seamless integration of a variety of facade panels on the same attachment platform, giving you multi-panel design freedom.

Unity supports both simple and elaborate projects; from flat panels to more complex, daring shapes. Engineered for complete architectural design control, Unity brings it all together.



### Seamless Integration of Panel Systems

Only Elemex® gives you Unity. Our proprietary attachment technology allows you to seamlessly integrate our panel systems.



### Design Flexibility

A variety of materials, colors, textures, and sizes can be panelized on our proprietary Unity attachment technology so you can create and design with confidence.



### Ease of Installation

Each of our facade systems follows the same installation method giving our certified network the ability to efficiently and effectively install our systems on site.



### Proven Performance

Our facade systems are North American compliant. Elemex has a 50+ year history in the building materials and facades industry with a proven track record of performance.



Architectural Facade Systems